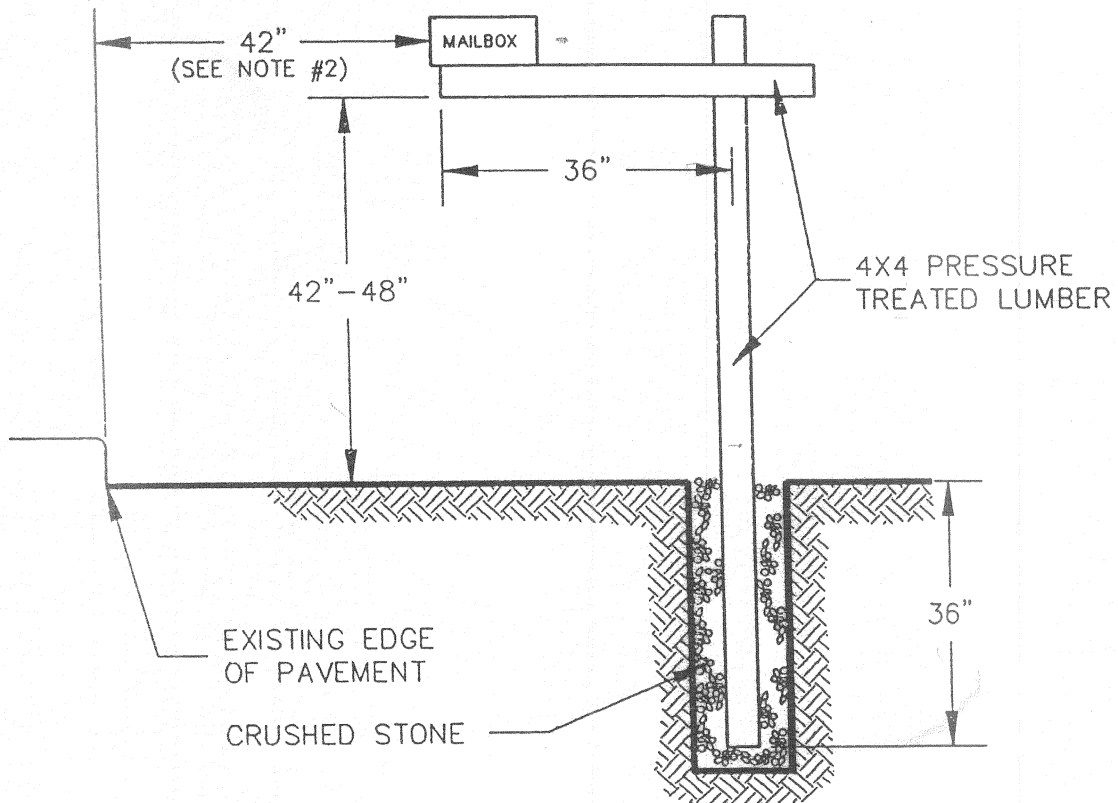


TOWN OF SWEDEN

RECOMMENDED CONSTRUCTION OF MAILBOX AND SUPPORT

The roadside face of the mailbox should be installed approximately 42" from the edge of the road. The approximate height should be between 42" and 48". Use all Pressure Treated 2x4's and 4x4 post. Galvanized nails are recommended with Pressure Treated wood. The post must be able to break or bend upon impact. The Town of Sweden assumes no responsibility for the construction or replacement of mailboxes or supports.

NOTE:

1. ALTERNATE MATERIALS FOR CONSTRUCTION OF SUPPORT MEMBERS MAY BE USED AS LONG AS THE DIMENSIONS ARE MAINTAINED.
2. DIMENSIONS MAY VARY DEPENDING ON ROAD CONDITIONS AS APPROVED BY HIGHWAY SUPERINTENDENT.

MAILBOX AND SUPPORT DETAIL

NTS